

# SG-SSC Series

## Compression Load Cells



**Capacities: 0-5t to 0-100t**

**Stainless steel construction**

**Environmentally sealed to IP67**

**Nitrogen filled**

**Operation from -50°C to 150°C**

**High safe overload capacity**

**Output matched for multiple cell installations**

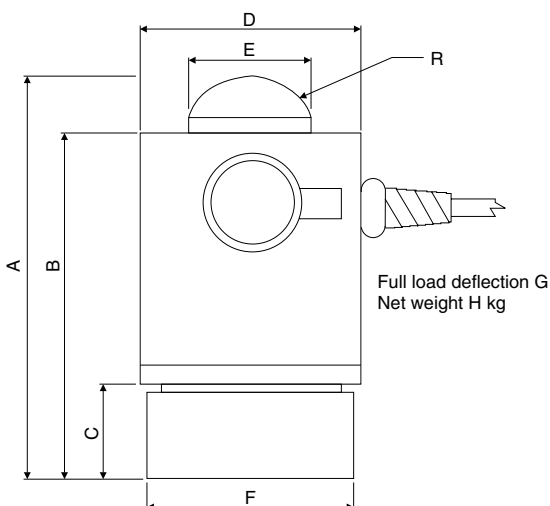
**Simple installation for tanks, hoppers and silos**

**Individually calibrated, test certificate supplied**

### Specifications

Capacity	Order Code
0-5t	SG-SSC-5T
0-10t	SG-SSC-10T
0-20t	SG-SSC-20T
0-30t	SG-SSC-30T
0-50t	SG-SSC-50T
0-100t	SG-SSC-100T

Nominal Capacity	0-5t to 0-100 tonne
Nominal Output at capacity	1.0mV/V $\pm$ 0.1%
Factory calibration mode	Compression
Linearity error	<0.05% FSO
Non-Repeatability	<0.02% FSO
Zero return/creep (30 mins)	0.03%/<0.045% FSO
Temp effect on span/10°C	<0.025% FSO
Temp effect on zero/10°C	<0.025% capacity
Insulation resistance - bridge to ground	>5000M $\Omega$
Insulation resistance - cable to ground	>1000M $\Omega$
Compensated temperature range	-10° to 50°C
Output resistance	705 $\Omega$ nominal
Input resistance	820 $\Omega$ nominal
Service load	100% of capacity
Safe load	200% of capacity
Mechanical failure	500% of capacity
Recommended excitation	5 to 20 V AC/DC
Environmental protection	IP67
Tilt (max. transverse displacement)	12mm

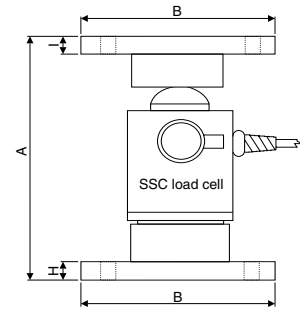
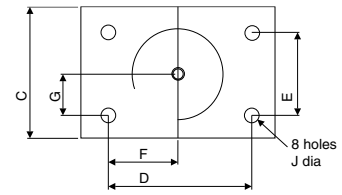
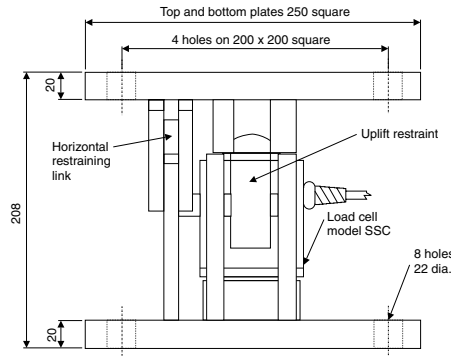
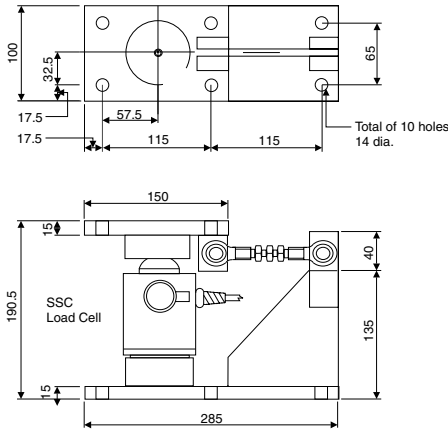


SG-SSC	A	B	C	D	E	F	G	Weight	R
5T	138.5	120.5	33	76	38	70	0.2	3.3	15
10T	138.5	120.5	33	76	38	70	0.2	3.3	15
20T	138.5	120.5	33	76	38	70	0.9	3.4	15
30T	138.5	120.5	33	90	54	70	1.2	3.6	35
50T	138.5	120.5	33	90	54	70	1.2	3.6	35
100T	200	168	53	114	76	105	1.6	11.5	50

Dimensions in mm Weight in kg

G = Full load deflection

# SG-SSC Series Accessories and Wiring Specifications



SG-SSC	5t - 20t	30t - 50t	100t
A	190.5	190.5	290
B	150	150	180
C	100	100	130
D	115	115	145
E	65	65	95
F	57.5	57.5	72.5
G	32.5	32.5	47.5
H	16	16	32
I	16	16	32
J	14	15	17.5

Mount type 1 is used with the SG-SSC load cell for applications requiring horizontal restraint at the load cell in one direction. Correctly arranged, they are used in multiples to restrain vessels in more than one direction and can provide ease of installation with aligning action. The mounts are fabricated in steel, zinc plated for protection and provide 20kN horizontal restraint at each mount.

Mount type 2 when used with the SG-SSC load cell offers increased horizontal restraint at the load cell with the addition of uplift restraint to resist overturning. Overturning is a factor that can arise in seismic zones or with wind loads where the vessel is relatively tall in relation to the width, such as with some grain silos. The mount, though similar to type 1, is somewhat more robust. The mount is fabricated in steel, zinc plated for protection and can provide restraint at each mount of 40kN horizontally and 100kN vertically

Mount type 3 is used with the SG-SSC in compression load applications. The mount can be used on its own or in conjunction with mounts 1 or 2. This mount is zinc plated

## ACCESSORIES

SG-SSC	5t - 20t	30t - 50t	100t
Type1 Mount	M-SSC1-20	M-SSC1-50	N/A
Type 2 Mount	M-SSC2-20	M-SSC2-50	N/A
Type 3 Mount	M-SSC3-20	M-SSC3-50	MSSC3-100

SSC load cell accessories are quality items engineered from steel and zinc plated for additional corrosion protection. For corrosion protection superior to that offered by zinc plating alone it is recommended that a top coat appropriate to the situation is applied. Consult the factory for custom designed mounts such as fully stainless steel or strengthened seismic resisting models.

State load cell model and capacity when ordering load cell accessories.

## WIRING SPECIFICATIONS

RED	+ Excitation
BLACK	- Excitation
GREEN	+ Signal
WHITE	- Signal
BROWN	+ Sense
BLUE	- Sense

## CABLE LENGTH

Cable is 6 core polyurethane sheathed with screen and has a length as follows.

SG-SSC	5t - 50t	10 metres
SG-SSC	100t	13 metres