

# SG-LPX Series

## Low Profile Compression



**Capacities: 0-25kg to 0-50t**

**Miniature compression type**

**25kg & 50kg - aluminium construction**

**Other capacities - tool steel construction**

**Sealed and coated for environmental protection to IP67**

**Individually calibrated with test certificate supplied**

**Simple installation**

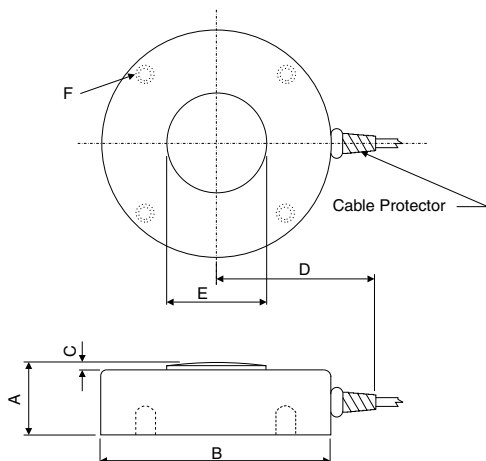
**Replaces similar low cost models**

### Specifications

Nominal Capacity	0-25kg to 0-50t
Nominal Output at capacity	2mV/V $\pm$ 0.1%
Factory calibration mode	Compression
Linearity error	<0.1% FSO
Non-Repeatability	<0.07% FSO
Zero return/creep (30 mins)	<0.07%/<0.1% FSO
Temp effect span/10°C	<0.025% FSO
Temp effect zero/10°C	<0.025% capacity
Insulation resistance - bridge to ground	>5000M $\Omega$
Insulation resistance - cable to ground	>1000M $\Omega$
Compensated temperature range	-10° to 50°C
Output resistance	351 $\Omega$ nominal
Input resistance	410 $\Omega$ nominal
Service load	100% of capacity
Safe load	150% of capacity
Mechanical failure	300% of capacity
Recommended excitation	5V to 20V AC/DC
Maximum Excitation	25VDC
Environmental protection	IP67

*All specifications are a maximum, as a % ( $\pm$ ) of full load, unless otherwise stated*

Capacity	Order Code
0-25kg	SG-LPX-25
0-50kg	SG-LPX-50
0-100kg	SG-LPX-100
0-250kg	SG-LPX-250
0-500kg	SG-LPX-500
0-1t	SG-LPX-1T
0-2.5t	SG-LPX-2.5T
0-5t	SG-LPX-5T
0-10t	SG-LPX-10T
0-25t	SG-LPX-25T
0-50t	SG-LPX-50T

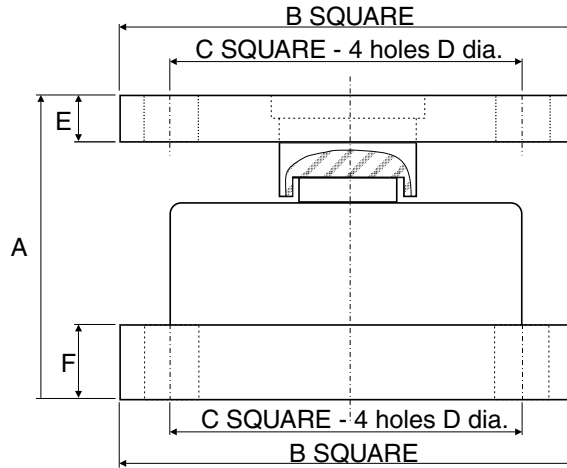


SG-LPX	A	B	C	D	E	F
-25	22	52	4	30	10	M5x0.8 on 44 PCD
-50	22	52	4	30	10	M5x0.8 on 44 PCD
-100	22	52	4	30	10	M5x0.8 on 44 PCD
-250	22	52	4	30	10	M5x0.8 on 44 PCD
-500	22	52	4	30	10	M5x0.8 on 44 PCD
-1T	22	52	4	30	10	M5x0.8 on 44 PCD
-2.5T	25	52	4	30	10	M5x0.8 on 44 PCD
-5T	30	100	5	95	20	M6x1.0 on 85 PCD
-10T	35	100	5	95	20	M6x1.0 on 85 PCD
-25T	50	115	10	100	32	M12x1.75 on 90 PCD
-50T	55	155	12	125	45	M12x1.75 on 130 PCD



# LPX Series Accessories and Wiring Specifications

## SG-LPX Mount Dimensions in mm



The complete mount is used with the **SG-LPX** in compression load applications.

SG-LPX	25kg	50kg	100kg	250kg	500kg	1t	2.5t	5t	10t	25t	50t
<b>A</b>	55	55	55	55	55	55	58	76	81	100	115
<b>B</b>	100	100	100	100	100	100	100	125	125	150	180
<b>C</b>	65	65	65	65	65	65	65	100	100	115	135
<b>D</b>	14	14	14	14	14	14	14	14	14	17	17
<b>E</b>	11.5	11.5	11.5	11.5	11.5	11.5	11.5	15	15	24	31
<b>F</b>	11.5	11.5	11.5	11.5	11.5	11.5	11.5	15	15	16	16

### ACCESSORY PART CODE

**For SG-LPX capacities: 25kg - 2.5t**  
Accessory Order Code: SG-MR-LPX-2

**For SG-LPX capacities: 5t and 10t**  
Accessory Order Code: SG-MR-LPX-10

**For SG-LPX capacity: 25t**  
Accessory Order Code: SG-MR-LPX-25

**For SG-LPX capacity: 50t**  
Accessory Order Code: SG-MR-LPX-50

SG-LPX load cell accessories are quality items engineered from steel and plated to protect against corrosion. State load cell model and capacity when ordering load cell accessories.

### WIRING SPECIFICATIONS

RED	+ Excitation
BLACK	- Excitation
GREEN	+ Signal
WHITE	- Signal
BROWN	+ Sense (6 core only)
BLUE	- Sense (6 core only)

### CABLE LENGTH

Cable is 4 or 6 core silver grey quality PVC sheathed with screen and has a length as follows. A cable protector complements load cells with 6 core cable

SG-LPX	25kg-2.5t	3 metres 4 core
SG-LPX	5t-10t	5 metres 6 core
SG-LPX	25t-50t	10 metres 6 core