

SG-PA6139 Series

Tension load cells

Features

- Capacities 0-2T to 0-10T
- Alloy Tool steel
- IP67 rating

Description

The SG-PA6139 tension load cells are designed for situations requiring measurement of tension in ropes, lifting applications, weighing applications or situations where warning & load limiting is required.

The accuracy and stability of the cells with their IP67 rating make them ideal for outdoor applications such as hoists, cranes etc.

The SG-PA6139 tension load cells are compatible with AIC's load cell monitors. When used with the HH4-WT hand held monitor, the cells provide a compact easily used weighing system that can be easily transported.



Specifications

Capacities	0-2t to 0-10t
Nominal output at capacity	2mV/V ± 0.1%
Linearity error	0.03% FSO
Hysteresis	0.02% FSO
Non-repeatability	0.03% FSO
Creep (30 mins)	0.03% FSO
Temp effect span	15ppm/°C of load
Temp effect zero	26ppm/°C of load
Compensated temp. range	-10°C to +40°C
Safe load	150% of capacity
Mechanical failure	300% of capacity
Recommended excitation	10VAC/DC
Maximum excitation	15VDC
Environmental protection	IP67
Cable	4 core with shield, Length: 8 metres

Order Code

SG-PA6139-2T*	Range 0-2t (2000kg)
SG-PA6139-3T	Range 0-3t (3000kg)
SG-PA6139-4T*	Range 0-4t (4000kg)
SG-PA6139-5T	Range 0-5t (5000kg)
SG-PA6139-6T*	Range 0-6t (6000kg)
SG-PA6139-8T*	Range 0-8t (8000kg)
SG-PA6139-10T*	Range 0-10t (10000kg)

*These models usually in stock

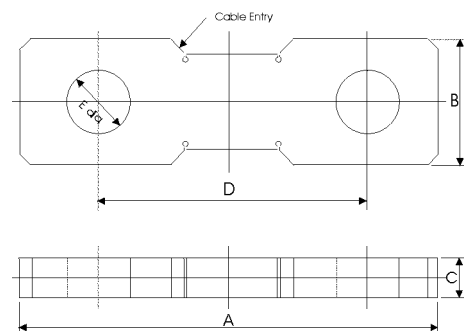
Wiring Specifications

RED	+ Excitation
BLACK	- Excitation
GREEN	+ Signal
WHITE	- Signal

Dimensions

Range	A	B	C	D	E
2t and 3t	199	60	22	133	32 dia
4t	218	68	26	138	36 dia
5t and 6t	227	70	28	147	40 dia
8t and 10t	283	90	34	183	50 dia

Dimensions in millimetres unless noted



LOPA6139-1.2-0

AMALGAMATED INSTRUMENT CO PTY LTD

ACN: 001 589 439

Unit 5, 28 Leighton Place Hornsby
NSW 2077 Australia

Telephone: +61 2 9476 2244
Facsimile: +61 2 9476 2902

e-mail: sales@aicpl.com.au
Internet: www.aicpl.com.au