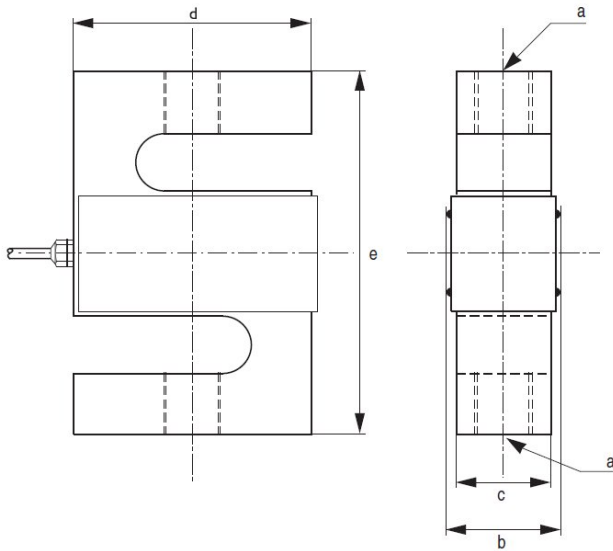


SCAIME ZFA Series S type load cells

Features

- Capacities 0-25kg to 0-5T
- Nickel plated steel construction
- IP65 rating
- Combined error 0.03% of full scale
- Simple installation
- Tension and compression operation
- Weighing or force measurement applications



Specifications

Capacities	0-25kg to 0-5T
Nominal output at capacity	3mV/V \pm 0.5%
Combined error	<0.030% FSO
Creep (30 mins)	<0.020% FSO
Temp effect span/10°C	<0.002% FSO
Temp effect zero/10°C	<0.002% capacity
Compensated temp. range	-10°C to +50°C
Safe load	120% of capacity
Mechanical failure	150% of capacity
Recommended excitation	1V - 15V AC/DC
Input resistance	385 Ω \pm 10 Ω
Output resistance	350 Ω \pm 5 Ω
Environmental protection	IP65
Cable length	5 metres

Range	a	b	c	d	e	Weight
25kg	M8x1.25	19.1	13	51	64	0.35kg
50kg	M8x1.25	19.1	13	51	64	0.35kg
100kg	M12x1.75	25	19	51	76	0.6kg
200kg	M12x1.75	25	19	51	76	0.6kg
500kg	M12x1.75	25	19	51	76	0.6kg
1t	M12x1.75	25.4	25.4	58	76	0.75kg
2.5t	M18x1.50	25.4	25.4	76	108	1.5kg
5t	M18x1.50	25.4	25.4	76	108	1.5kg

Wiring Specifications

RED	+ Excitation
BLACK	- Excitation
GREEN	+ Signal
WHITE	- Signal

Order Code

SG-ZFA-25	Range 0-25kg
SG-ZFA-50	Range 0-50kg
SG-ZFA-100	Range 0-100kg
SG-ZFA-200	Range 0-200kg
SG-ZFA-500	Range 0-500kg
SG-ZFA-1T	Range 0-1T (1,000kg)
SG-ZFA-2.5T	Range 0-2.5T (2,500kg)
SG-ZFA-5T	Range 0-5T (5,000kg)



Rod end bearings to suit also available

SG-KFA-1.0-0

AMALGAMATED INSTRUMENT CO

ABN: 80 619 963 692

Unit 5, 28 Leighton Place Hornsby
NSW 2077 Australia

Telephone: +61 2 9476 2244
Facsimile: +61 2 9476 2902

e-mail: sales@aicpl.com.au
Internet: www.aicpl.com.au