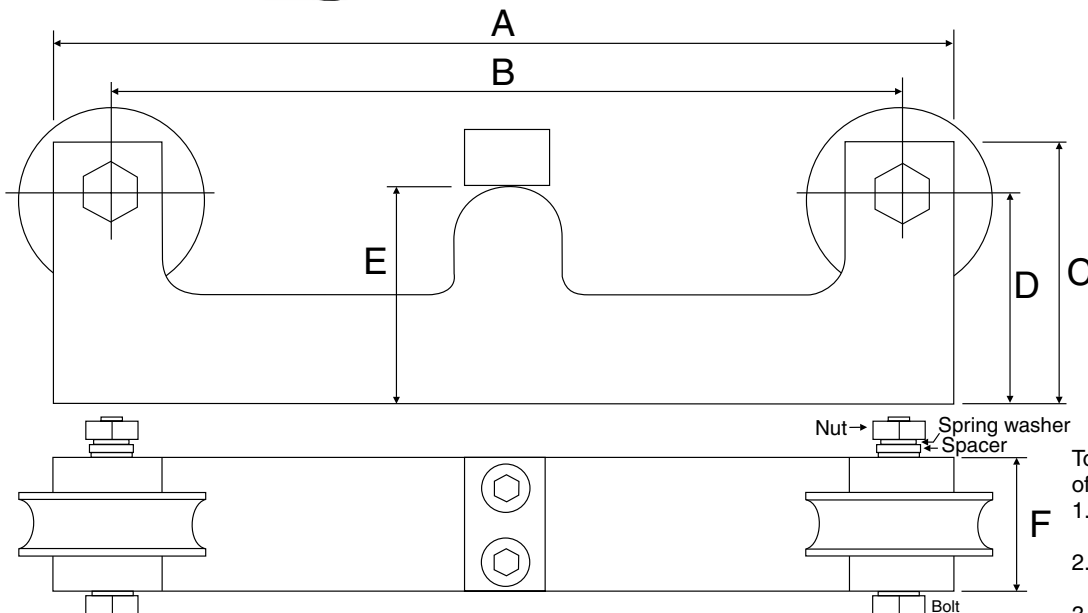


# Rope Clamp Load Cell - Model PA6170



## Specifications:

Capacity:	3 models available: 6-10mm rope dia 11-16mm rope dia 17-22mm rope dia
Output:	2mV/V nominal
Zero balance:	±1% of full scale
Creep (1 hour):	< 0.05% of full scale
Non-linearity:	< 0.03% of full scale
Hysteresis:	< 0.03% of full scale
Repeatability:	< 0.02% of full scale
Temperature effect on output:	< 20 ppm/°C applied load
Temperature effect on zero:	< 40 ppm/°C applied load
Operating temperature range:	-40°C to 80°C
Compensated temperature range:	-10°C to 40°C
Safe overload:	1.5 x capacity
Ultimate overload:	3 x capacity
Input impedance:	800 ±30 Ω
Output impedance:	700 ±4 Ω
Insulation resistance:	> 2,000 MΩ
Recommended excitation:	10V DC
Maximum Excitation:	15V DC
Cable length:	6m length cable, 4 core shielded
Material:	Alloy tool steel, nickel plated
Environmental protection:	IP67
<b>Colour code:</b>	
	Red: Excitation +, Black: Excitation -
	Green: Signal +, White: Signal -



To remove wheels for insertion of cable:

1. Remove nut, spring washer and spacer
2. Turn bolt with a spanner to loosen if necessary
3. Bolt should now push out allowing removal of wheel

Order code	Wire dia.	A	B	C	D	E	F	Weight
PA6170/06-10/1T	6 - 10mm	276	242	75	54	61	40	4.3kg
PA6170/11-16/4T	11 - 16mm	276	242	75	54	61	40	4.3kg
PA6170/17-22/5T	17 - 22mm	330	280	110	80	75	56	9.5kg

All dimensions are in mm

LOAD6170-1.2-1